

2020 ANNUAL REPORT



We are firm believers that **everyone** is deserving of love, and needs to feel love and belonging. Every person who experiences **Agape Oasis** in any capacity leaves feeling Agape Love all over them - naturally and unconditionally.



LETTER FROM OUR PRESIDENT/CEO

Dear Friends of Agape Oasis,

For many, navigating life amid a global pandemic and civil unrest made 2020 a year of fear, loss, stress, and life-changing circumstances that nobody could have prepared for. As a family and solutions-focused organization, we saw and experienced challenges that directly affected the community we serve and work in. Through all that was taking place, I held on to what kept us going, and that's faith. Faith for a brighter future ahead and confidence in the Agape love that oozes out of us and all over our community.

We saw the Agape kind of love in action when you, our friends of Agape Oasis, showed up in support of our Collect and Give efforts to donate, create, and distribute **7,978 kits over five days**, including **food/snacks, household items, diapers, and toiletries** to support individuals and families when their local access to goods and services had been destroyed. That is just a **glimpse** of the outpouring of love and support from our donors and volunteers that helped Agape Oasis remain a lighthouse in North Minneapolis during a time when darkness seemed to be the new normal.

Had we not received the gifts, donations, and prayers that we did in 2020, I might be writing a very different kind of letter. I cannot thank you all enough for your consideration and contributions to Agape Oasis and the support of the individuals and families that we serve, in addition to caring for your own families during such an interesting time. Our team at Agape Oasis was inspired and motivated by the incredible generosity we were shown throughout the year and worked relentlessly to provide creative solutions to overcome every barrier we faced in 2020.

We don't know what 2021 has in store for us, but we know that with friends and supporters like you, we will continue to operate in excellence and provide outstanding services to those in need in our communities.

Sending love and hope to all, and we thank you with our whole hearts for being a valued supporter and friend of Agape Oasis.

Agape Love All Over You,

Jori Thibodeaux

Jori Thibodeaux, **President/CEO**

WHO WE ARE

*"Leadership is not about titles, positions, or flowcharts. It is about one life influencing another."
-John Maxwell-*

OUR LEADERSHIP

JORI THIBODEAUX

President/Chief Executive Officer

HELENE PEARSON

Program Director, Agape
Child Development Center

PETHUEL LEFLORE

Program Director, Oasis of Love
Crisis Intervention Center

CECE NTANGA

Community Engagement Specialist

BOARD OF DIRECTORS

CHRISTOPHER THIBODEAUX
Career Fitness Center

PERCELLE GREGORY
SuitSupply

STEVE BROWNE
A Plus Business Services

RAVI NORMAN
Norman Global Enterprises

AMANDA KOPI SCHKE
Incubate to Innovate

DR. CRESTON BURSE
MINACT Inc.

JOY WISE DAVIS
University of Minnesota

BRETT CARTER
Xcel Energy

DANIKA OKERSTROM
Elastic

PRIYA MORIOKA
Global Language Connections

MISSION

To provide culturally relevant services that focus on **empowering** people, **restoring** families, **healing** individuals, and **strengthening** communities.

VISION

A community in which **individuals** and **families** have **access** to the tools and resources needed to **thrive** past trauma and live their **best life**.

WHAT WE OFFER

EARLY CHILDHOOD

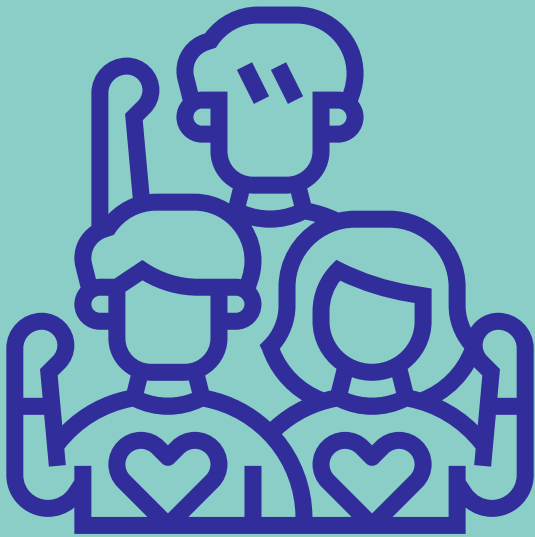
Mixing **love** and **education** tailoring the social and intellectual **development** of our **scholars**, producing innovative **trailblazers**.

Caring for 6wks-12yrs old,
24 hours, 7 days a week



COMMUNITY ENGAGEMENT

We engage our community through our **volunteer** and **internship** program, our community **outreach**, and our **partnerships** with neighborhood associations and community stakeholders.



CRISIS SUPPORT

We support the **empowerment** and **healing** of individuals and families (men, women, and children) impacted by **Domestic Violence** or **Sexual Assault**.



Our family services reached
beyond our program
participants, reaching

11,938 people in our
community

Over

200

scholars
enrolled at
Agape

Our
volunteer
numbers
peaked at

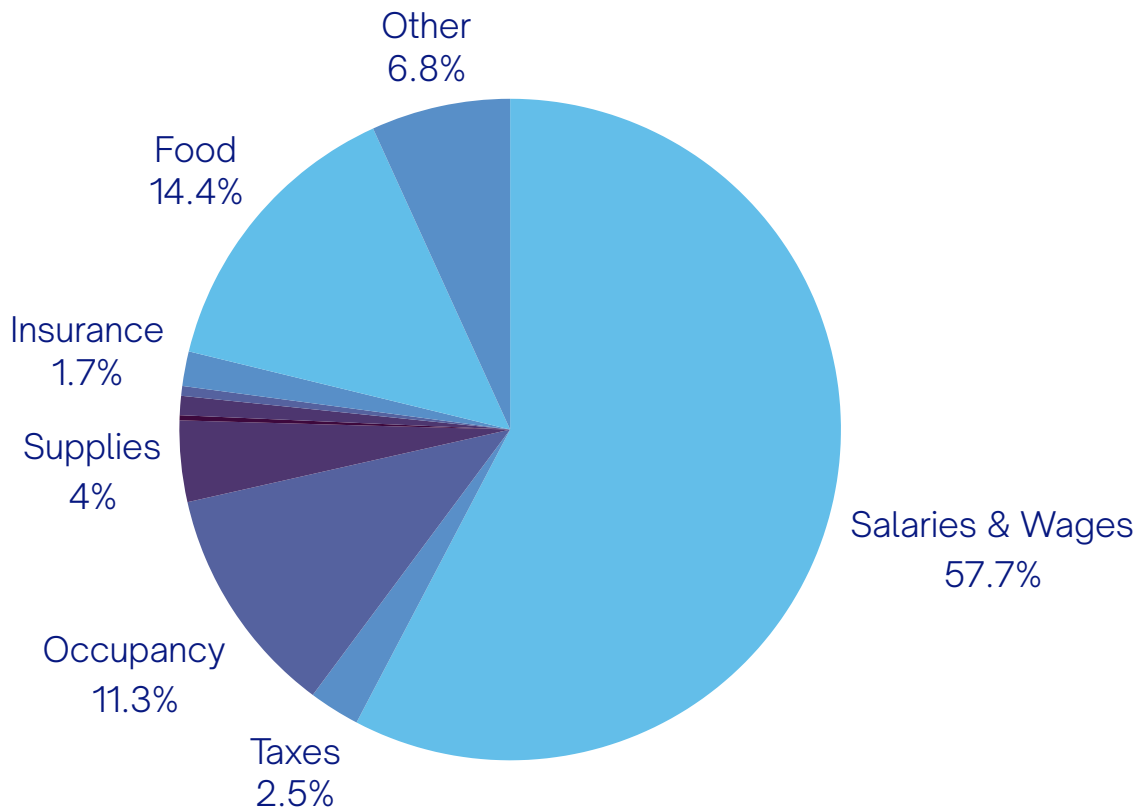
375

Because of you, Agape Oasis was able to remain
'thriving through a pandemic, and
expand our reach across
community



FINANCIALS

Expenses



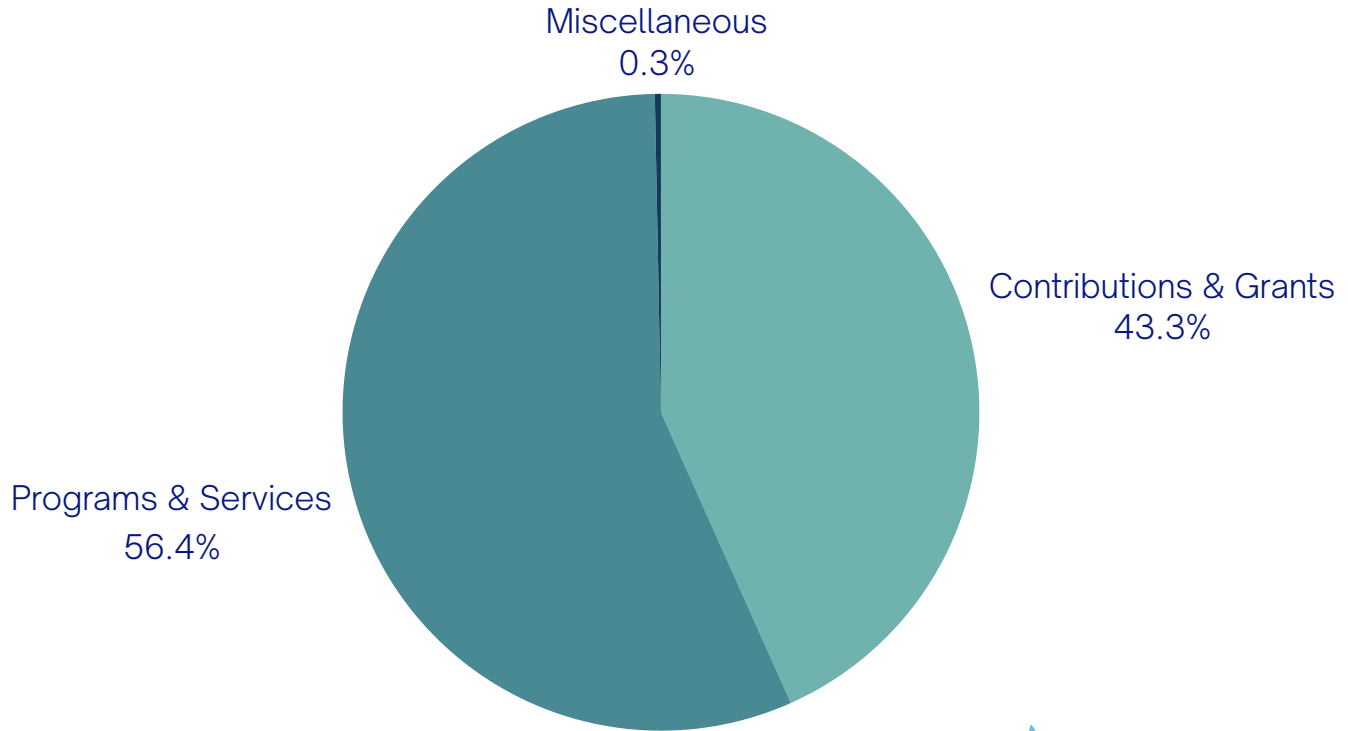
Salaries and wages	\$769,907
Taxes	\$33,215
Occupancy	\$150,787
Supplies	\$52,936
Advertising/Promotion	\$3,329
Accounting	12,500
Travel	\$6,370
Insurance	\$22,600
Food	\$192,187
Other	\$75,670
Total Expenditures	\$1,410,175

\$769,907.00

directly invested in our
people to push forward
our mission.

FINANCIALS

Revenue



Donations & Grants	\$601,346
Programs & Services	\$782,734
Investment Income	\$38
Miscellaneous	\$4263
Total Revenue	\$1,388,381



**Our local
community
and donors
like you!**



Thank you for an *inspiring* year!

Baker, Kelly
Bass-Roberts, Susan
Berg, Kimberly
Black at Microsoft
Boyd, Tiffanie
Bulver, Leah
Butler Family Foundation
Carter, Rebecca
Davis, Lovell
Evenstad, Shannon
Johnson, Tyseanna
Kauls, Lynda
Kent, Remi
Kind World Foundation
Kutty, Rebecca
Lilledahl-Sweeney, Jenni
Lucas, Elisabeth
McGarry, Rachel
Minnesota Coalition for Battered Women
Minnesota Department of Education
Minnesota Human Services
Morioka, Priya
Nayar, Michelle

Nayar, Michelle
Olson-Huffman, Julie
Pohlad Family Foundation
Pierce, Stephanie
Rieckenberg, Cara
Santos, Bolaji
Smith-Moore, Kimberly
State of Minnesota
Stegic, Suzie
Thompson, Susan
Tuseth, Emily
Ulland, Carolyn
Violence Free Minnesota



Agape Oasis
2304 Emerson Ave N
Minneapolis, MN 55411
www.agapeoasis.com
612-287-9775
info@agapeoasis.com
admin@agapeoasis.com